



With a west facing rear garden and no onward chain! This two bedroom end-terrace home is ideally located on Salters Close, Garden Village. Salters Close, a quiet cul-de-sac is perfectly placed to provide access to local shops including both the ASDA and M&S stores, transport links via Regent Centre Metro Service, local bus routes, schooling and the shops, cafes and restaurants on Gosforth High Street.

The accommodation briefly comprises: entrance hall with stairs to first floor; 23ft living space with feature fireplace, under-stairs storage cupboard, bay window and French doors leading out to the rear garden; kitchen with fitted units and work surfaces. The first floor landing with storage cupboard gives access to; two double bedrooms, both with fitted wardrobe storage; bathroom complete with three piece suite. Externally, a west facing garden laid to block paving with fenced boundaries and gated access to the rear service lane. Recently refurbished, early viewings are advised.

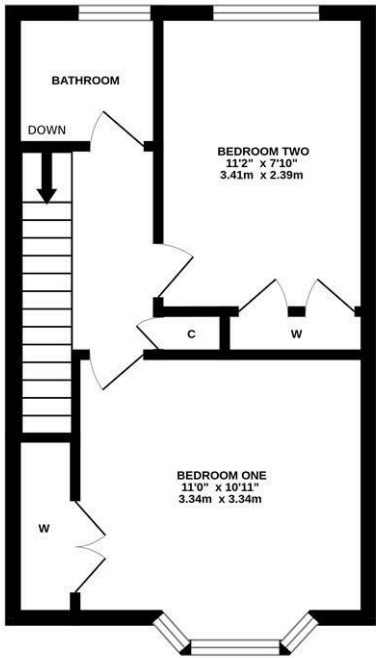
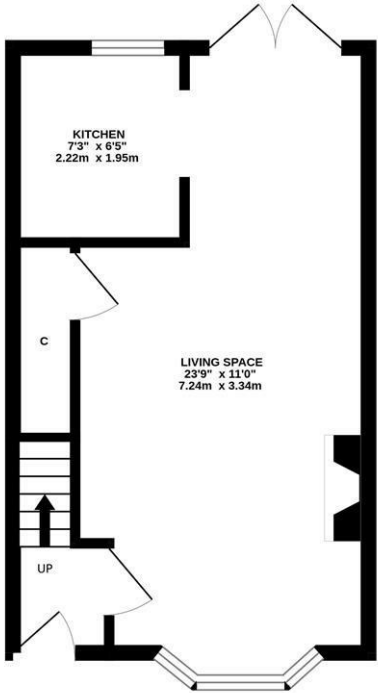
Two Bedroom Mid-Terrace | 606 Sq ft (56.3m2)
| 23ft Living Space | Kitchen | Bathroom | West Facing Rear Garden | GCH & DG | Popular Location | No Onward Chain | Freehold | Council Tax Band B | EPC: C

EPC - C



GROUND FLOOR
300 sq.ft. (27.9 sq.m.) approx.

1ST FLOOR
306 sq.ft. (28.4 sq.m.) approx.



TOTAL FLOOR AREA: 606 sq.ft. (56.3 sq.m.) approx.

Whilst every attempt has been made to ensure the accuracy of the floorplan contained here, measurements of doors, windows, rooms and any other items are approximate and no responsibility is taken for any error, omission or mis-statement. This plan is for illustrative purposes only and should be used as such by any prospective purchaser. The services, systems and appliances shown have not been tested and no guarantee as to their operability or efficiency can be given.

Made with Metropix ©2025



Offers Over £175,000

IMPORTANT NOTE: These particulars and the descriptions and measurements herein do not constitute representation and whilst every effort has been made to ensure accuracy, this cannot be guaranteed.

